

12英寸全自动PANEL-SAW切割分选一体机

12 INCH FULLY-AUTOMATIC PANEL SAW AND SORT MACHINE

ARP-9100

● 最大有效加工尺寸 (mm)

Maximum effective product size (mm)

350*350

● 主轴配置方式

Configuration method of spindle

对向式双主轴+单工作台

Opposed dual-spindle + Single-workbench



● 特点 FEATURE

配备全自动排渣收渣结构，减少人力维护成本。

Equipped with automatic slag discharge and slag collection structure, reducing human maintenance costs.

专用治具，高真空吸附基板，无需贴膜，减掉了贴膜和解胶的工艺流程和相关的成本。

Special jig, high vacuum adsorption substrate, no need to apply film, minus the process of applying film and decoupling and the associated costs.

不同产品切割转换快捷，只需更换定制治具即可完成。

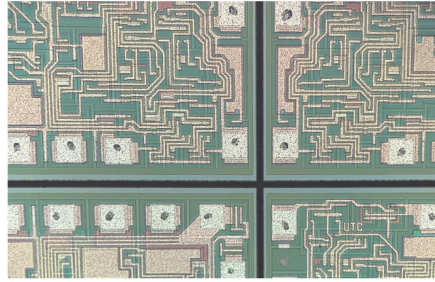
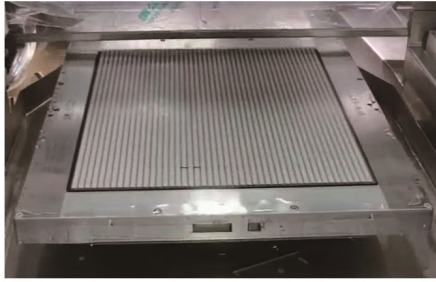
Quick changeover from product to product cutting, simply by changing custom jigs.

双轴大尺寸切割，最大可兼容产品350mm*350mm。

Dual-spindle large-size cutting, compatible with products up to a maximum size of 350mm*350mm.

可配备全自动上料，进行传输定位、对准切割、刀痕检测、清洗、干燥，实现全自动运行模式，大大降低人力成本。

It can be equipped with fully automatic loading for transfer positioning, alignment cutting, knife mark detection, cleaning and drying, realizing fully automatic operation mode and greatly reducing labor cost.



• 功能 FUNCTION

注: 「*」为选配功能, 支持个性化定制
PS: 「*」 is an optional feature that can be customized by the customer

高精度非接触式测高

High-precision non-contact setup

可配自动上料结构自动上料

Can be equipped with automatic loading structure automatic loading

故障自纠错功能, 多种位置实施检测

Fault self-correcting function, a variety of locations to implement the detection

自动校准、自动刀痕检测功能

Automatic calibration & Automatic kerf check

刀片破损检测系统

Blade breakage detection

适应不同工艺, 可选多种自动对准算法

Adapt to different processes with a variety of auto-alignment algorithms

配备高真空单元, 保证设备真空

Equipped with high vacuum unit to ensure the vacuum of the equipment

软件定制: 复杂切割功能等

Software customization: complex cutting functions, etc.

工厂自动化模块, 后续可接分选、贴膜等工艺设备

Factory automation module, subsequently can be connected to sorting, laminating and other process equipment

• 参数 PARAMETER

X轴 X axis	进刀速度输入范围 (mm/s)	Input range of feed speed(mm/s)	0.1-600
Y轴 Y axis	单步步进量 (mm)	Single step increment (mm)	0.0001
Y轴 Y axis	到位精度 (mm)	Reach accuracy (mm)	0.005以内/310 0.003以内/5 (单一误差) Within 0.005 / 310 Within 0.003 / 5 (single error)
Z轴 Z axis	重复精度 (mm)	Repetition accuracy (mm)	0.001
Z轴 Z axis	刀片最大尺寸 (mm)	Maximum size of blade (mm)	φ58
θ轴 θ axis	旋转角度 (deg)	Rotation angle (deg)	230
主轴 Spindle	配置方式	Configuration method	对向式双主轴+单工作台 Opposed dual-spindle+single-workbench
主轴 Spindle	输出功率 (kW)	Output power (kW)	1.8 (2.4可选) at 30,000 min-1 1.8 (2.4 optional) at 30,000 min-1
主轴 Spindle	转速范围 (min-1)	Speed range (min-1)	3,000 - 60,000
设备重量 (kg)		Weight (kg)	≈7,000
设备尺寸/W*D*H (mm)		Size /W*D*H (mm)	4,860*1,900*1,900

• 应用 APPLICATION

